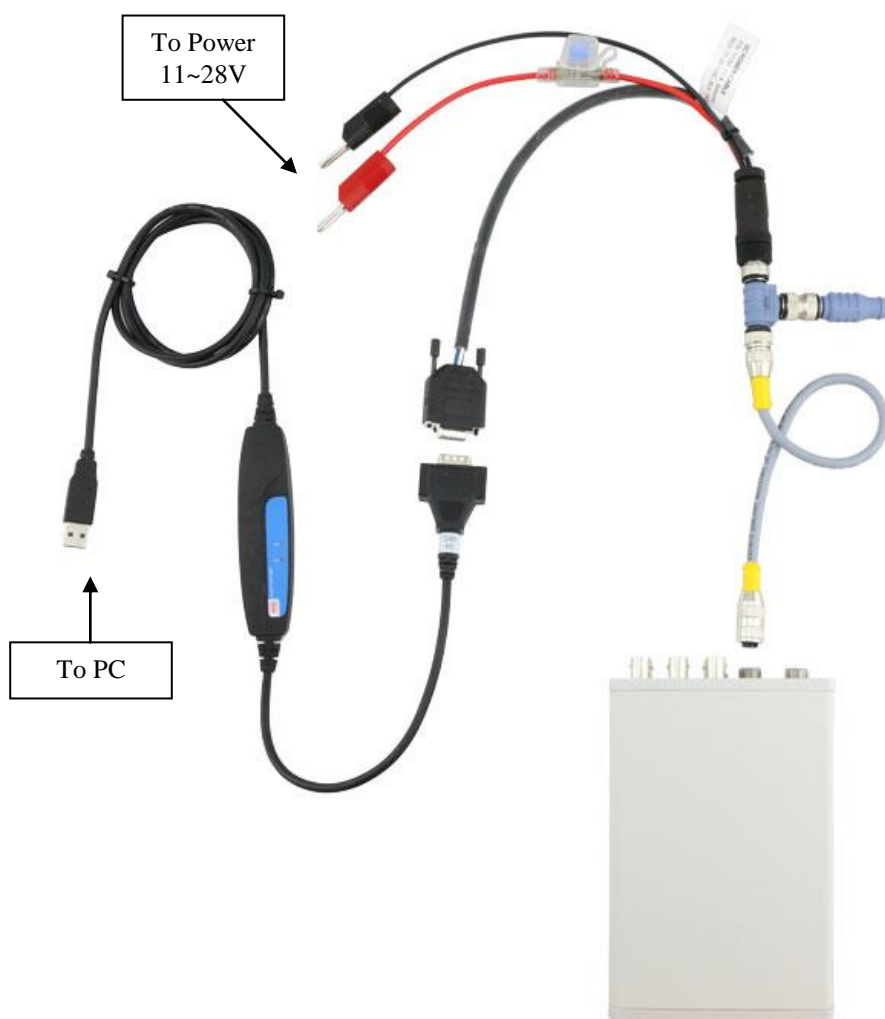


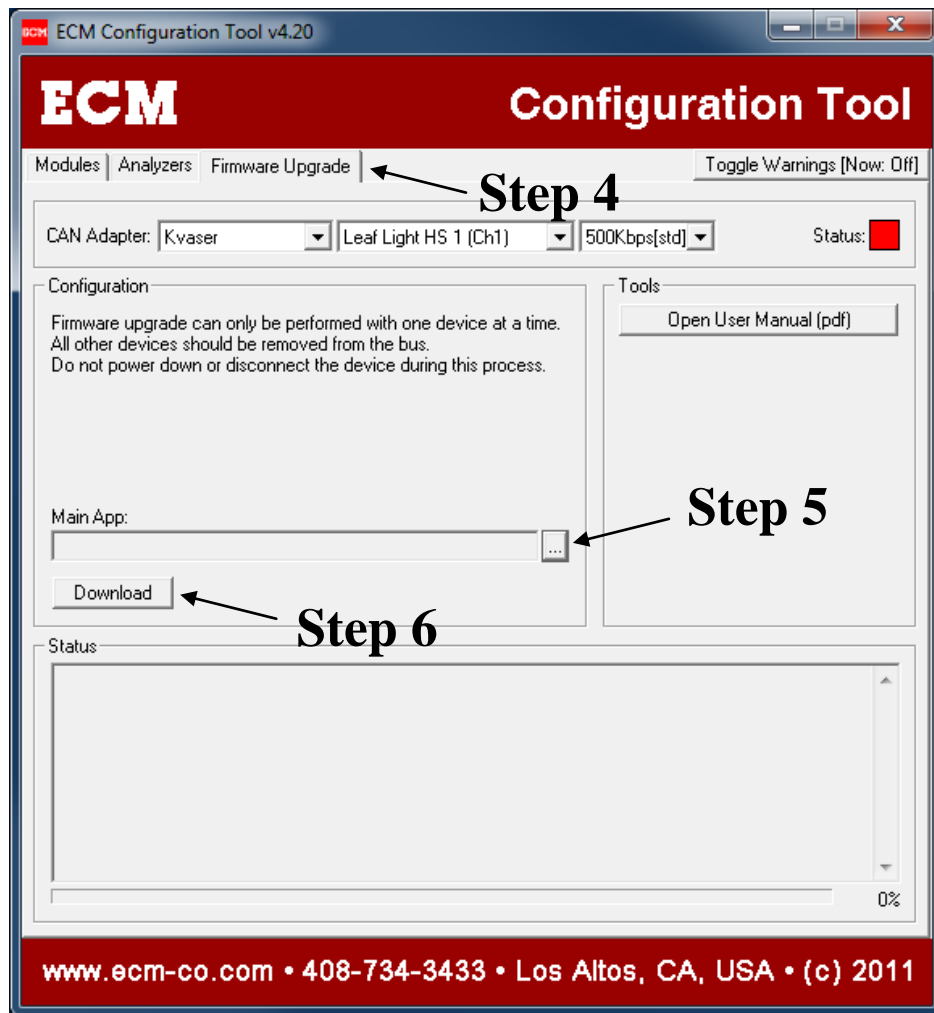
**Firmware Update Procedure for Display Heads**

1. You will need ECM's Configuration Tool software, which is available to download for free on our website at <http://ecm-co.com/download.asp?35010>. We recommend that you always use the latest version of the software.
2. Remove the Display Head from your existing system, and connect only the one Display Head to be updated to a CAN bus on its own. No other Display Heads, modules, etc. should be on the bus. See diagram below. Connect to the Display Head's port labeled "EIB", not the one labeled "CAN". Connect a supported CAN-USB adapter to the bus. We recommend the Kvaser Leaf Light (ECM P/N 13-02), shown in the diagram. The ECM Configuration Tool supports Kvaser, VectorCAN, and Peak PCAN adapters.



3. Open the ECM Configuration Tool. Check that the CAN adapter is not in use by other programs or other portions of the ECM Configuration Tool. To check other portions of the Configuration Tool, click on the "Modules" tab and the "Display Head" tab. The port status should be red meaning "stopped". Otherwise, hit the "Stop" button.

4. Click the “Firmware Upgrade” tab, and select the CAN adapter that is connected to the Display Head to be updated.
5. In the “Main App” box, browse to the file for the firmware you wish to flash into the Display Head. The file extension should be .s19.
6. Click the “Download” button, and the reflash process will begin. Do not interrupt this process. The progress is displayed in the “Status” box below. When finished, the Display Head will reboot and be running the new firmware.



7. When update is complete, reattach the Display Head to your system and reassign the module via the menu (SYS > MOD). Reassign the analog outputs (SYS > AOOUT). Reassign the displayed parameters by using the up and down button.
8. If you have any problems, contact us by phone at (408) 734-3433 or by email at [support@ecm-co.com](mailto:support@ecm-co.com).