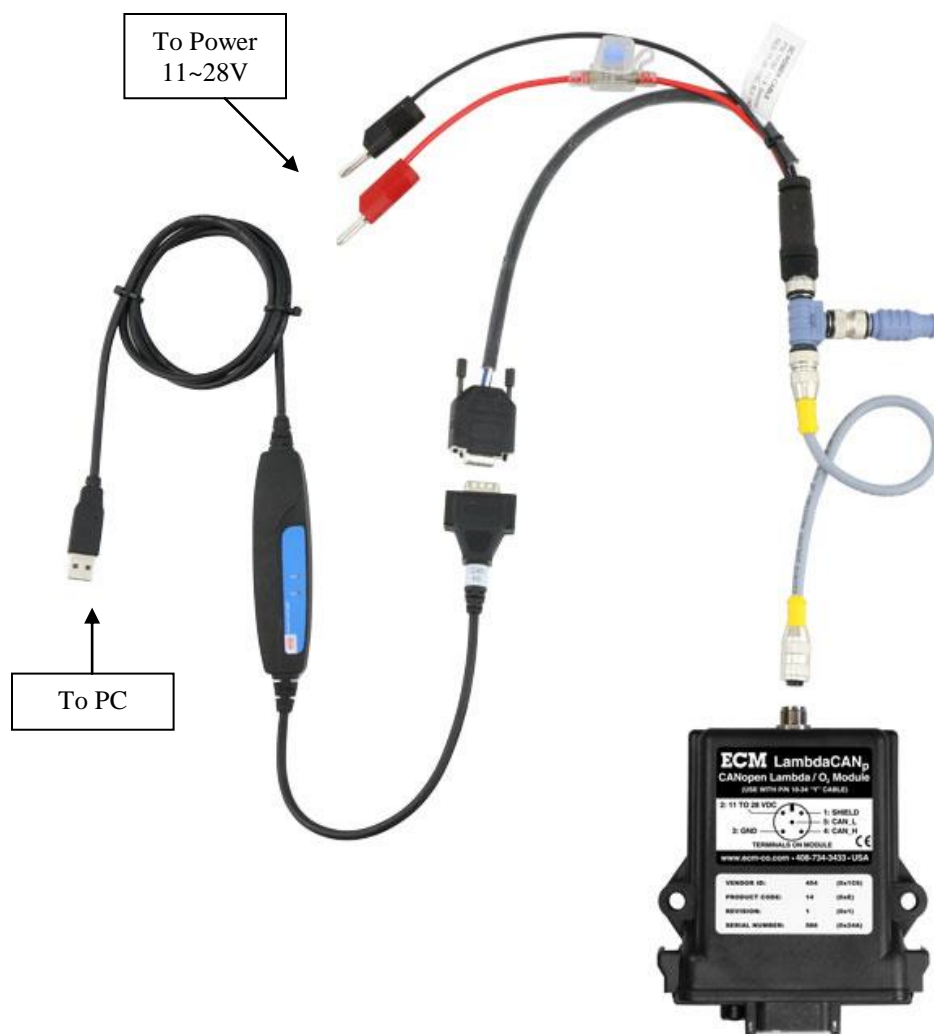


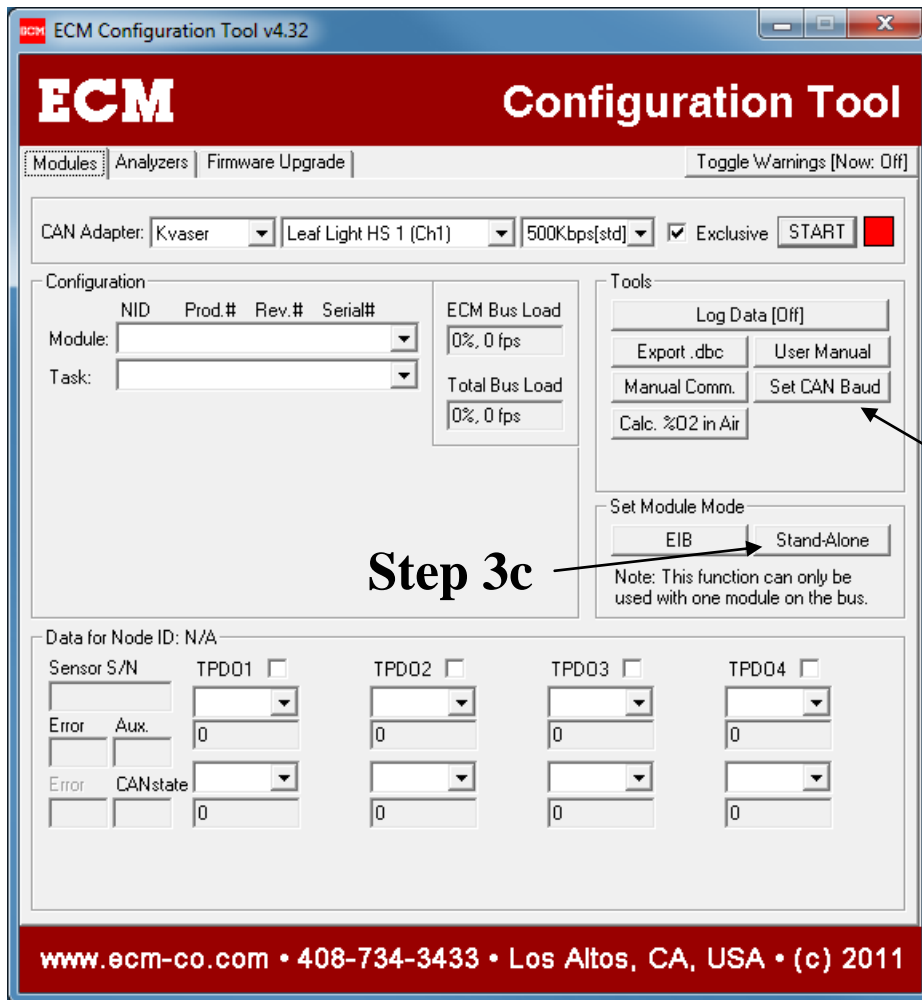
**Firmware Update Procedure for Modules**

1. You will need ECM's Configuration Tool software, which is available to download for free on our website at <http://ecm-co.com/download.asp?35010>. We recommend that you always use the latest version of the software.
2. Remove the module from your existing system, and connect only the one module to be updated to a CAN bus on its own. No other modules, Display Heads, etc. should be on the bus. See diagram below. Connect a supported CAN-USB adapter to the bus. We recommend the Kvaser Leaf Light (ECM P/N 13-02), shown in the diagram. The ECM Configuration Tool supports Kvaser, VectorCAN, and Peak PCAN adapters.

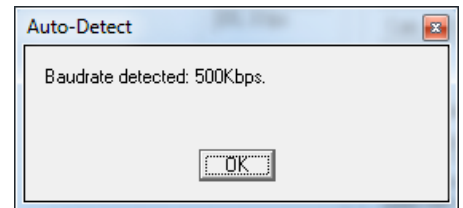


3. The module should be in broadcast/standalone mode (not EIB mode). EIB mode is used when the module is placed in a system with the Display Head. To change the module from EIB mode to standalone mode:
  - a. Open the Configuration Tool, and select the "Modules" tab.
  - b. Select the CAN adapter, select "500Kbps" baud rate, and click the "Start" button.
  - c. Click the "Stand-alone" button under the "Set Module Mode" section.

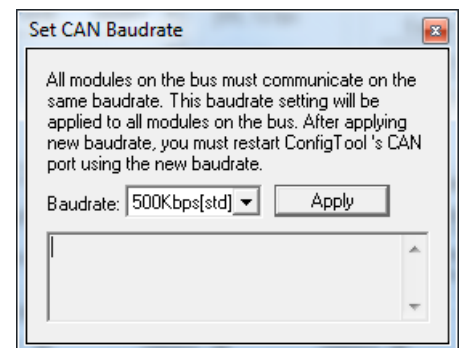
4. The module should be communicating on CAN baud rate 500Kbps. To check and change the baud rate:
  - a. Open the Configuration Tool, and select the “Modules” tab.
  - b. Select the CAN adapter, select “Auto Baud” for baud rate, and click the “Start” button.
  - c. The baud rate will be reported in a pop-up window. If it is 500Kbps, skip to step 5. Otherwise continue to the step d.
  - d. Click on “Set CAN Baud” and select “500Kbps”. Click the “Apply” button.



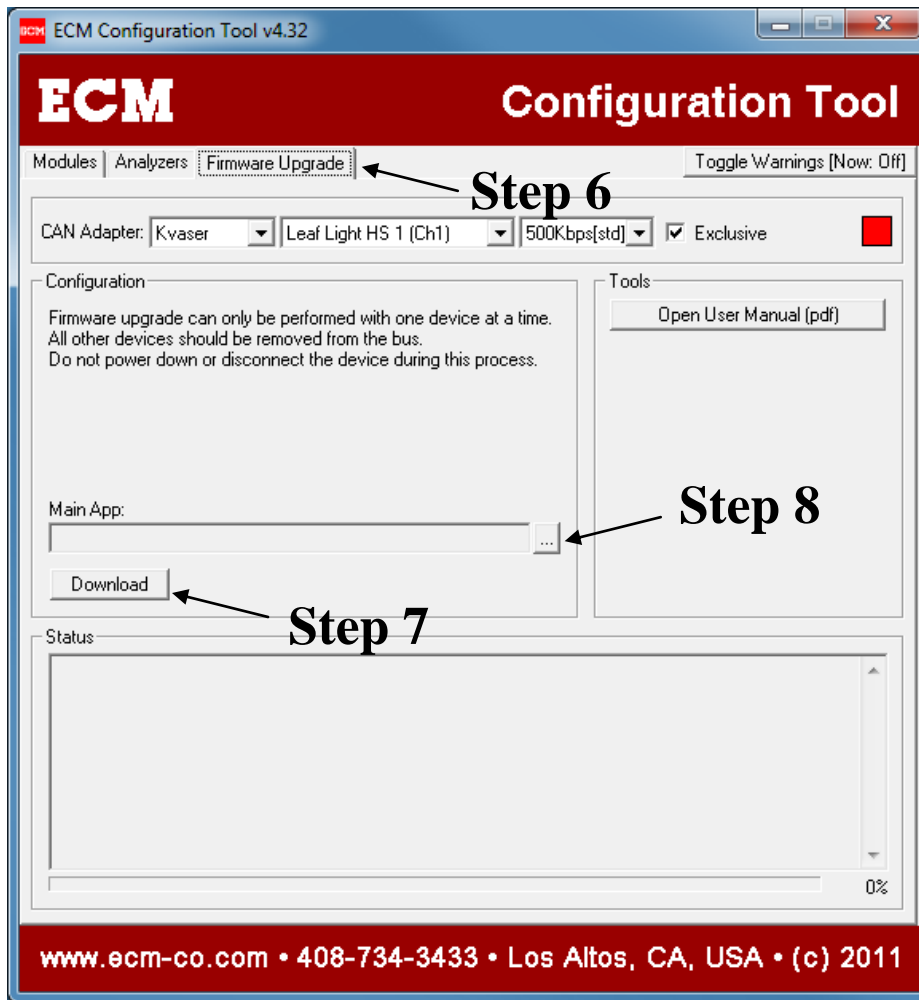
## Step 4c



## Step 4d



5. Now we can begin the Firmware update. Open the ECM Configuration Tool. Check that the CAN adapter is not in use by other programs or other portions of the ECM Configuration Tool. To check other portions of the Configuration Tool, click on the “Modules” tab and the “Display Head” tab. The port status should be red meaning “stopped”. Otherwise, hit the “Stop” button.
6. Click the “Firmware Upgrade” tab, and select the CAN adapter that is connected to the module to be updated.
7. In the “Main App” box, browse to the file for the firmware you wish to flash into the module. The file extension should be .s19.
8. Click the “Download” button, and the reflash process will begin. Do not interrupt this process. The progress is displayed in the “Status” box below. When finished, the module will reboot and be running the new firmware.



9. If you have any problems, contact us by phone at (408) 734-3433 or by email at [support@ecm-co.com](mailto:support@ecm-co.com).